

## Chapter 10: Formwork, Formwork Pipes and Construction Fleece



**Formwork Accessories**



**Formwork Pipes**



**Ceiling Edge Formwork**



**Various Formwork Parts**



**Positioning Mats, Stop Beads, Moisture Protection between Foundation and Walls**



**Formwork Oil Injection / Formwork Oil**



**Fleece**

## Formwork Accessories

**Spacer tube (combined spreader)**

Complete with 2 plugs, manufactured in one piece, waterproof according to Ö-NORM B3303 (Austrian standards), fire prevention F120, sound insulation

Itm.Nr.	Description	Unit
D150	Spacer tube (combined spreader) complete with 2plugs, 150mm	50items/bag Sack
D200	Spacer tube (combined spreader) complete with 2plugs, 200mm	50items/bag Sack
D250	Spacer tube (combined spreader) complete with 2plugs, 250mm	50items/bag Sack
D300	Spacer tube (combined spreader) complete with 2plugs, 300mm	50items/bag Sack

**Chuck cone DKO**

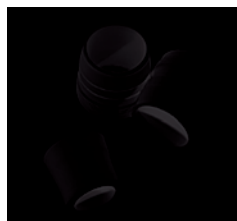
Is removed after stripping. 2 cm in length have to be subtracted for the chuck cones when trimming the double-sided spacer tubes.

Itm.Nr.	Description	Unit
DKO20	Chuck cone DKO 20mm	250items/bag BAG
DKO22	Chuck cone DKO 22mm	250items/bag BAG

**Grooved cone connector RKO**

The grooved cone connector for the spacer tubes ARO 22 - 26 remains in the masonry. The sealing plug STO 22 is used for sealing.

Itm.Nr.	Description	Unit
RKO2226	Grooved cone connector RKO for ARO 22-26mm	200items/bag BAG

**Sealing plug STO**

For sealing of spacer tubes ARO, star-shaped tubes SRO and grooved cone connector RKO.

Itm.Nr.	Description	Unit
STO22	Inner cap STO 22mm	500items/bag BAG

**Cone SP22V**

An adaptor end piece for extruded plastic tubes. For individual wall thicknesses.

Itm.Nr.	Description	Unit
SP22V	Cone Sputniknik, reinforced diameter 22mm	250items/bag Sack
ST22PV	Plug for cone Sputnik SP 22 V DS	250items/bag Sack

**Continuous U-shaped spacer BRUE**

U-shaped spacer rail for lower reinforcement. The broadly spaced openings let the concrete flow through easily.

Itm.Nr.	Description	Unit
BRUE20	Continuous U-shaped spacer BRUE 20mm 2.50 running metres/item	100running metres/batch BATCH
BRUE25	Continuous U-shaped spacer BRUE 25mm 2.50 running metres/item	100running metres/batch BATCH
BRUE30	Continuous U-shaped spacer BRUE 30mm 2.50 running metres/item	100running metres/batch BATCH
BRUE35	Continuous U-shaped spacer BRUE 35mm 2.50 running metres/item	50running metres/batch BATCH
BRUE40	Continuous U-shaped spacer BRUE 40mm 2.50 running metres/item	50running metres/batch BATCH
BRUE50	Continuous U-shaped spacer BRUE 50mm 2.50 running metres/item	50running metres/batch BATCH
BRUE202	Continuous U-shaped spacer BRUE 20mm 2.00 running metres/item	100running metres/batch BATCH
BRUE252	Continuous U-shaped spacer BRUE 25mm 2.00 running metres/item	100running metres/batch BATCH
BRUE302	Continuous U-shaped spacer BRUE 30mm 2.00 running metres/item	100running metres/batch BATCH



### Continuous U-shaped spacer, closed

The laterally closed shape prevents the reinforcement from being immersed. For applications on soft surfaces.

Itm.Nr.	Description	Unit
BRUE20G	Continuous U-shaped spacer BRUE 20mm, closed, 2.50 running metres/item 100running metres/batch	BATCH
BRUE25G	Continuous U-shaped spacer BRUE 25mm, closed, 2.50 running metres/item 100running metres/batch	BATCH
BRUE30G	Continuous U-shaped spacer BRUE 30mm, closed, 2.50 running metres/item 100running metres/batch	BATCH
BRUE35G	Continuous U-shaped spacer BRUE 35mm, closed, 2.50 running metres/item 50running metres/batch	BATCH
BRUE40G	Continuous U-shaped spacer BRUE 40mm, closed, 2.50 running metres/item 50running metres/batch	BATCH



### Distance tube ARO

As wall strengthening - spacer rails for the vertical formwork. The tubes have a better hold in the concrete due to the grooved surface.

Itm.Nr.	Description	Unit
ARO2226	Spacer tube ARO I22/A26 2.00running metres/item 25items/batch	BATCH



### Inner cap IST

The inner cap acts as a water seal and lowers the sound transmission on the clamping space.

Itm.Nr.	Description	Unit
IST22	Inner cap IST 22mm 500items/bag	BAG



### Clamping ring KLR

A spacer for vertical and horizontal reinforcement. Suitable for iron diameters of 4 -12 mm. Thus only a spacer is required for a concrete covering.

Itm.Nr.	Description	Unit
KLR20	Clamping ring KLR 20mm 500items/bag	BAG
KLR25	Clamping ring KLR 25mm 500items/bag	BAG
KLR30	Clamping ring KLR 30mm 250items/bag	BAG
KLR35	Clamping ring KLR 35mm 250items/bag	BAG
KLR40	Clamping ring KLR 40mm 250items/bag	BAG
KLR50	Clamping ring KLR 50mm 125items/bag	BAG



### Chamfer strip DKP

With nail holes, for breaking angles on pillars, ceiling joists etc.

Itm.Nr.	Description	Unit
DKP77	Chamfer strip DKP 7/10mm, full 2.50running metres/rail, 40rails/batch	BATCH
DKP1111	Chamfer strip DKP 11/15mm, hollow 2.50running metres/rail, 40rails/batch	BATCH
DKP1515	Chamfer strip DKP 15/21mm, hollow 2.50running metres/rail, 40rails/batch	BATCH
DKP2020	Chamfer strip DKP 20/28mm, hollow 2.50running metres/rail, 40rails/batch	BATCH
DKP3030	Chamfer strip DKP 30/41mm, hollow 2.50running metres/rail, 20rails/batch	BATCH



### Chamfer strip DKN

With nose, the nose is nailed-on in the front in this design.

Itm.Nr.	Description	Unit
DKN7	Chamfer strip DKN with nose 7/10/10mm, full 2.50running metres/rail, 40rails/batch	BATCH
DKN10	Chamfer strip DKN with nose 11/21/15mm, hollow 2.50running metres/rail, 40rails/batch	BATCH
DKN15	Chamfer strip DKN with nose 15/21/11mm, hollow 2.50running metres/rail, 40rails/batch	BATCH
DKN20	Chamfer strip DKN with nose 20/21/27mm, hollow 2.50running metres/rail, 40rails/batch	BATCH



### Chamfer strip DKPH wood

In various dimensions, made of wood.

Itm.Nr.	Description	Unit
DKPH1010	Chamfer strip, wood 10/10 2m 200running metres/batch Packaging unit 50/pallet	BATCH
DKPH1414	Chamfer strip, wood 14/14 2m 200running metres/batch Packaging unit 50/pallet	BATCH
DKPH1919	Chamfer strip, wood 19/19 2m 200running metres/batch Packaging unit 50/pallet	BATCH
DKPH2525	Chamfer strip, wood 25/25 2m 100running metres/batch Packaging unit 50/pallet	BATCH
DKPH3030	Chamfer strip, wood 30/30 2m 100running metres/batch Packaging unit 50/pallet	BATCH

## Formwork, Formwork Pipes and Construction Fleece



### Trapezoidal strip DKTH wood

In various dimensions, made of wood.

Itm.Nr.	Description	Unit
DKTH201510	Trapezoidal strip, wood 20/15/10 2m 100running metres/batch Packaging unit 50/pallet	BATCH
DKTH302015	Trapezoidal strip, wood 30/20/15 2m 100running metres/batch Packaging unit 50/pallet	BATCH
DKTH504030	Trapezoidal strip, wood 50/40/30 2m 100running metres/batch Packaging unit 50/pallet	BATCH



### Water driptail WAS

Is integrated into balconies and cantilever slabs. It prevents water damage to the plaster and masonry.

Itm.Nr.	Description	Unit
WAS1410	Water driptail WAS 14/10mm, 2.50running metres/rail, 40rails/batch	Batch



### Plastic nails KNA

For anchoring insulation boards in concrete.

Itm.Nr.	Description	Unit
KNA75	Plastic nail KNA 75mm 500items/bag	BAG
KNA100	Plastic nail KNA 100mm 250items/bag	BAG
KNA125	Plastic nail KNA 125mm 250items/bag	BAG
KNA150	Plastic nail KNA 150mm 125items/bag	BAG
KNA200	Plastic nail KNA 200mm 100items/bag	BAG



### Base mounting plate UPM

Mounting plate with slot for building components and precast concrete units. Do not use when under permanent strain. Combinations make every size is possible.

Itm.Nr.	Description	Unit
UPM3	Base mounting plate rpm 3mm 500items/bag	Sack
UPM7	Base mounting plate rpm 7mm 250items/bag	Sack
UPM9	Base mounting plate rpm 9mm 250items/bag	Sack



### Disc DIS

6 rings are connected to each other by lightweight bars. The rings are torn off when laid out and put on the formwork.

Itm.Nr.	Description	Unit
DIS15	Disc DIS 15mm 50items/box	BOX
DIS20	Disc DIS 20mm 50items/box	BOX
DIS25	Disc DIS 25mm 40items/box	BOX



### Multifix MUX

For level reinforcements, diameters of up to 10 mm iron.

Itm.Nr.	Description	Unit
MUX20	Multifix MUX 20mm 500items/bag	BAG
MUX255	Multifix MUX 25mm 500items/bag	BAG
MUX30	Multifix MUX 30mm 250items/bag	BAG
MUX40	Multifix MUX 40mm 250items/bag	BAG



### Formwork stop

For fixing formwork boards to the wall base.

Itm.Nr.	Description	Unit
SONH	Formwork stop with nail CENTERED 100items/pg.	Pg.
SONHO	Formwork stop without nail CENTERED 100items/pg.	Pg.

## Formwork, Formwork Pipes and Construction Fleece



### Formwork stop OFF-CENTRED

Formwork stop without nail, as spacer stop between the formwork.

Itm.Nr.	Description	Unit
EXZENT	Formwork stop without nail OFF-CENTERED 100items/pg.	Pg.



### Protective cap for protruding iron ends

Protective cap with mushroom-shaped head for protection against protruding iron ends.

Itm.Nr.	Description	Unit
SKA816	Protective cap for protruding iron ends 8-16mm 125items/pg.	Pg.
SKA1632	Protective cap for protruding iron ends 16-32mm 125items/pg.	Pg.



### Duo wall spacer

Secures distance to formwork, the reinforcement layers to each other and the wall thickness. For iron up to 10mm.

Itm.Nr.	Description	Unit
DUO20020	Wall spacer Duo 200mm for 20mm concrete covering 100items/pg.	Pg.
DUO20025	Wall spacer Duo 200mm for 25mm concrete covering 100items/pg.	Pg.
DUO20030	Wall spacer Duo 200mm for 30mm concrete covering 100items/pg.	Pg.
DUO25020	Wall spacer Duo 250mm for 20mm concrete covering 100items/pg.	Pg.
DUO25025	Wall spacer Duo 250mm for 25mm concrete covering 100items/pg.	Pg.
DUO25030	Wall spacer Duo 250mm for 30mm concrete covering 100items/pg.	Pg.
DUO30020	Wall spacer Duo 300mm for 20mm concrete covering 100items/pg.	Pg.
DUO30025	Wall spacer Duo 300mm for 25mm concrete covering 100items/pg.	Pg.
DUO30030	Wall spacer Duo 300mm for 30mm concrete covering 100items/pg.	Pg.

## Formwork Pipes



### Formwork pipes spiral

Normal concrete surface quality with normal cavities and slight definition of the spiral-shaped impression of the formwork pipe.

#### Formwork pipe "Spiral" SRS200

With quick release, pipe inside diameter 200mm, wall thickness 5mm, concrete 0.033, concrete speed 6m, 2.60 kg/running metre.

Itm.Nr.	Description	Unit
SRS200250	Formwork pipe, spiral, 200mm diameter, 250cm	Item
SRS200300	Formwork pipe, spiral, 200mm diameter, 300cm	Item
SRS200400	Formwork pipe, spiral, 200mm diameter, 400cm	Item

#### Formwork pipe "Spiral" SRS250

With quick release, pipe inside diameter 250mm, wall thickness 5mm, concrete 0.052, concrete speed 6m, 3.20 kg/running metre.

Itm.Nr.	Description	Unit
SRS250250	Formwork pipe, spiral, 250mm diameter, 250cm	Item
SRS250300	Formwork pipe, spiral, 250mm diameter, 300cm	Item
SRS250400	Formwork pipe, spiral, 250mm diameter, 400cm	Item
SRS250500	Formwork pipe, spiral, 250mm diameter, 500cm	Item

#### Formwork pipe "Spiral" SRS300

With quick release, pipe inside diameter 300mm, wall thickness 5mm, concrete 0.074, concrete speed 6m, 4.10 kg/running metre.

Itm.Nr.	Description	Unit
SRS300250	Formwork pipe, spiral, 300mm diameter, 250cm	Item
SRS300300	Formwork pipe, spiral, 300mm diameter, 300cm	Item
SRS300400	Formwork pipe, spiral, 300mm diameter, 400cm	Item
SRS300500	Formwork pipe, spiral, 300mm diameter, 500cm	Item

## Formwork, Formwork Pipes and Construction Fleece

### Formwork pipe "Spiral" SRS400

With quick release, pipe inside diameter 400mm, wall thickness 5mm, concrete 0.132, concrete speed 6m, 5.50 kg/running metre.

Itm.Nr.	Description	Unit
SRS400300	Formwork pipe, spiral, 400mm diameter, 300cm	Item
SRS400350	Formwork pipe, spiral, 400mm diameter, 350cm	Item
SRS400400	Formwork pipe, spiral, 400mm diameter, 400cm	Item



### Formwork pipes smooth

Normal concrete surface quality with occasional cavities and an otherwise smooth concrete surface as the impression of the plastic insert.

### Formwork pipe "Smooth" SRG200

With quick release, pipe inside diameter 200mm, wall thickness 5mm, concrete 0.033, concrete speed 6m, 2.60 kg/running metre.

Itm.Nr.	Description	Unit
SRG200300	Formwork pipe, smooth, 200mm diameter, 300cm	Item
SRG200400	Formwork pipe, smooth, 200mm diameter, 400cm	Item

### Formwork pipe "Smooth" SRG250

With quick release, pipe inside diameter 250mm, wall thickness 5mm, concrete 0.052, concrete speed 6m, 3.20 kg/running metre.

Itm.Nr.	Description	Unit
SRG250300	Formwork pipe, smooth, 250mm diameter, 300cm	Item
SRG250400	Formwork pipe, smooth, 250mm diameter, 400cm	Item

### Formwork pipe "Smooth" SRG300

With quick release, pipe inside diameter 300mm, wall thickness 5mm, concrete 0.074, concrete speed 6m, 4.10 kg/running metre.

Itm.Nr.	Description	Unit
SRG300300	Formwork pipe, smooth, 300mm diameter, 300cm	Item
SRG300400	Formwork pipe, smooth, 300mm diameter, 400cm	Item

### Formwork pipe "Smooth" SRG400

With quick release, pipe inside diameter 400mm, wall thickness 5mm, concrete 0.132, concrete speed 6m, 5.50 kg/running metre.

Itm.Nr.	Description	Unit
SRG400300	Formwork pipe, smooth, 400mm diameter, 300cm	Item
SRG400400	Formwork pipe, smooth, 400mm diameter, 400cm	Item

## Ceiling Edge Formwork

Spezieller Kundenaufdruck möglich: 16 Zeichen bei 2 m und 8 Zeichen bei 1 m



### Ceiling edge formwork XPS FZ

Thermo made of extruded polystyrene (XPS) in 200 or 100 cm length, honeycombed surface (PIR) and smooth foam, tongue and groove, base made of fibre cement (FZ) in 4 mm thickness XPS 35 FZ: XPS 35 mm, 70 mm wide. XPS 50 FZ: XPS 50 mm, 100 mm wide. XPS 60 FZ: XPS 60 mm, 100 mm wide.

Itm.Nr.	Description	Unit
30092M	Ceiling edge formwork XPS 35 FZ type18 158mm/1m Packaging unit180rails/pallet	RAIL
30092	Ceiling edge formwork XPS 35 FZ type18 158mm/2m Packaging unit180rails/pallet	RAIL
30093M	Ceiling edge formwork XPS 35 FZ type18 178mm/1m Packaging unit180rails/pallet	RAIL
30093	Ceiling edge formwork XPS 35 FZ type18 178mm/2m Packaging unit180rails/pallet	RAIL
30094M	Ceiling edge formwork XPS 35 FZ type18 198mm/1m Packaging unit180rails/pallet	RAIL
30094	Ceiling edge formwork XPS 35 FZ type18 198mm/2m Packaging unit180rails/pallet	RAIL
30095M	Ceiling edge formwork XPS 35 FZ type18 218mm/1m Packaging unit180rails/pallet	RAIL
30095	Ceiling edge formwork XPS 35 FZ type18 218mm/2m Packaging unit180rails/pallet	RAIL
30097M	Ceiling edge formwork XPS 35 FZ type18 248mm/1m Packaging unit180rails/pallet	RAIL
30097	Ceiling edge formwork XPS 35 FZ type18 248mm/2m Packaging unit180rails/pallet	RAIL
30098M	Ceiling edge formwork XPS 35 FZ type18 298mm/1m Packaging unit180rails/pallet	RAIL
30098	Ceiling edge formwork XPS 35 FZ type18 298mm/2m Packaging unit180rails/pallet	RAIL



## Formwork, Formwork Pipes and Construction Fleece

Itn.Nr.	Description	Unit
30082M	Ceiling edge formwork XPS 50 FZ type18 158mm/2m Packaging unit180rails/pallet	RAIL
30082	Ceiling edge formwork XPS 50 FZ type18 158mm/2m Packaging unit180rails/pallet	RAIL
30083M	Ceiling edge formwork XPS 50 FZ type18 178mm/1m Packaging unit180rails/pallet	RAIL
30083	Ceiling edge formwork XPS 50 FZ type18 178mm/2m Packaging unit180rails/pallet	RAIL
30084M	Ceiling edge formwork XPS 50 FZ type18 198mm/1m Packaging unit180rails/pallet	RAIL
30084	Ceiling edge formwork XPS 50 FZ type18 198mm/2m Packaging unit180rails/pallet	RAIL
30085M	Ceiling edge formwork XPS 50 FZ type18 218mm/1m Packaging unit180rails/pallet	RAIL
30085	Ceiling edge formwork XPS 50 FZ type18 218mm/2m Packaging unit180rails/pallet	RAIL
30087M	Ceiling edge formwork XPS 50 FZ type18 248mm/1m Packaging unit180rails/pallet	RAIL
30087	Ceiling edge formwork XPS 50 FZ type18 248mm/2m Packaging unit180rails/pallet	RAIL
30088M	Ceiling edge formwork XPS 50 FZ type18 298mm/1m Packaging unit180rails/pallet	RAIL
30088	Ceiling edge formwork XPS 50 FZ type18 298mm/2m Packaging unit180rails/pallet	RAIL

Itn.Nr.	Description	Unit
30060M	Ceiling edge formwork XPS 60 FZ type16 158mm/1m Packaging unit180rails/pallet	RAIL
30060	Ceiling edge formwork XPS 60 FZ type16 158mm/2m Packaging unit160rails/pallet	RAIL
30061M	Ceiling edge formwork XPS 60 FZ type18 178mm/1m Packaging unit180rails/pallet	RAIL
30061	Ceiling edge formwork XPS 60 FZ type18 178mm/2m Packaging unit160rails/pallet	RAIL
30062M	Ceiling edge formwork XPS 60 FZ type18 198mm/1m Packaging unit180rails/pallet	RAIL
30062	Ceiling edge formwork XPS 60 FZ type18 198mm/2m Packaging unit180rails/pallet	RAIL
30063M	Ceiling edge formwork XPS 60 FZ type18 218mm/1m Packaging unit180rails/pallet	RAIL
30063	Ceiling edge formwork XPS 60 FZ type18 218mm/2m Packaging unit180rails/pallet	RAIL
30064M	Ceiling edge formwork XPS 60 FZ type18 248mm/1m Packaging unit180rails/pallet	RAIL
30064	Ceiling edge formwork XPS 60 FZ type18 248mm/2m Packaging unit180rails/pallet	RAIL
30065M	Ceiling edge formwork XPS 60 FZ type18 298mm/1m Packaging unit180rails/pallet	RAIL
30065	Ceiling edge formwork XPS 60 FZ type18 298mm/2m Packaging unit180rails/pallet	RAIL



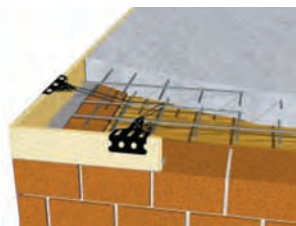
### Ceiling edge formwork HWL FZ

Made of wood wool / cement, multilayer lightweight building boards in 200 cm length, base made of fibre cement (FZ) in 4 mm thickness. HWL 35 FZ: HWL 35 mm, 70 mm wide. HWL 50/3 FZ: HWL 50 mm, 100 mm wide.

Itn.Nr.	Description	Unit
30012	Ceiling edge formwork HWL 35 FZ type16 158mm/2m Packaging unit160rails/pallet	RAIL
30013	Ceiling edge formwork HWL 35 FZ type18 178mm/2m Packaging unit160rails/pallet	RAIL
30014	Ceiling edge formwork HWL 35 FZ type20 198mm/2m Packaging unit160rails/pallet	RAIL
30015	Ceiling edge formwork HWL 35 FZ type22 218mm/2m Packaging unit160rails/pallet	RAIL
30017	Ceiling edge formwork HWL 35 FZ type25 248mm/2m Packaging unit120rails/pallet	RAIL

Itn.Nr.	Description	Unit
30023	Ceiling edge formwork HWL 50 FZ type18 178mm/2m Packaging unit120rails/pallet	RAIL
30024	Ceiling edge formwork HWL 50 FZ type20 198mm/2m Packaging unit120rails/pallet	RAIL
30025	Ceiling edge formwork HWL 50 FZ type22 218mm/2m Packaging unit120rails/pallet	RAIL
3002724	Ceiling edge formwork HWL 50 FZ type24 298mm/2m Packaging unit90rails/pallet	RAIL
30027	Ceiling edge formwork HWL 50 FZ type25 298mm/2m Packaging unit90rails/pallet	RAIL

## Formwork, Formwork Pipes and Construction Fleece



### Fixation clamp for shuttering XPS

At board thickness of 35mm up to 200mm height - 1item/ running metre, from 200mm height - 2 items /running metre. At board thickness of 50mm up to 200mm height - not necessary. At board thickness of 50mm from 200mm height - 1item/ running metre, from 250mm height - 2 items /running metre.

Itn.Nr.	Description	Unit
30120	Fixation clamp for formwork XPS	50items/packet



### Shutterboard HB

Made of wood concrete, element size 250cm. The slab HB is used as an economical building component for ceiling edge formwork. It is nailed with the smooth side facing outwards to the outside of the formwork prior to concreting. The thickness of the subsequent concrete covering has to be taken into consideration (upper edge of the slab = upper edge concrete covering). The dove tail ridges on the inside of the slab HB engage positively with the concrete. After the stripping of the concrete formwork the slab remains as a building component in the concrete. It is not necessary to further encase the covering to be concreted. A third of the element height must be encased.

Itn.Nr.	Description	Unit
30051R	Shutterboard HB 200mm 2.5m	150Sta/pallet
30053R	Shutterboard HB 300mm 2.5m	100Sta/pallet
30055R	Shutterboard HB 350mm 2.5m	75Sta/pallet
30054R	Shutterboard HB 400mm 2.5m	75Sta/pallet

## Various Formwork Parts



### Formwork clamp Rapid 5-10

Suitable for all round bars of 5-10 mm, stable version with strong wedge. This wedge is irrevocably connected with the clamp so that it cannot get lost. 0.4 kg.

Itn.Nr.	Description	Unit
4811580	Formwork clamp Rapid for round bars 5-10mm	Item



### Formwork clamping fixture Rapid

Easy clamping of formwork. 2.0 kg.

Itn.Nr.	Description	Unit
4811582	Formwork clamping fixture Rapid	Item



### Expansion anchor

For anchor rod 15mm, 0.3 kg.

Itn.Nr.	Description	Unit
48115351	Expansion anchor	Item



### Anchor rod, 15mm non-galvanised or galvanised

External diameter 17mm, screw thread 10mm, non-galvanised or galvanised. 1.45 kg/running metre.

Itn.Nr.	Description	Unit
4810001	Anchor rod, 15mm, non-galvanised per running metre	RM
4810001V	Anchor rod, 15mm, galvanised per running metre	RM



### Two-wing deck nut, galvanised

For hex wrench 30 mm, 0.6 kg.

Itn.Nr.	Description	Unit
4811280	Deck nut 80mm, galvanised	Item
4811210	Deck nut 100mm, galvanised	Item



### Winged nut

For hex wrench 30 mm, 0.4 kg.

Itn.Nr.	Description	Unit
4810124	Winged nut	Item



### Combination fixing 120x120 mm

Inclination up to 10°, for hex wrench 30 mm. 1.5 kg.

Itn.Nr.	Description	Unit
4810142	Combination fixing 120x120mm, inclination 10°	Item



## Formwork, Formwork Pipes and Construction Fleece



### Wall clamps

Heavy-duty design for all sophisticated concrete work. Adjustable range up to 160 cm possible. The offset punching of the screw clamp allows for continual clamping of the formwork. - captive wedge - exact angle guide - robust, painted design - clamp with wedge.

Itm.Nr.	Description	Unit
4811530	Wall clamp 0-70cm	Item
4811535	Wall clamp 0-120cm	Item



### Chimney head casing

Continuously adjustable in every direction, easy, lightweight and fast encasing and stripping, angle rails 8x8 cm with welded water drip nose.

Itm.Nr.	Description	Unit
4812010	Chimney head casing 1.0m, painted	Item
4812015	Chimney head casing 1.5m, painted	Item
4812020	Chimney head casing 2.0m, painted	Item

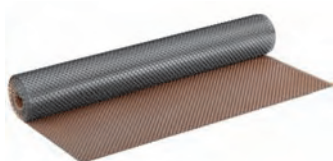


### Prop "A"

Tested according to Austrian standards (ÖNORM) EN 1065, interior pole 48mm, exterior pole 57mm, linchpin 15mm, head & base plasters 110x110x6mm. Admissible loads of various props in accordance with the separate table. - anti-squash device - fail-safe of interior pole - heavy-duty design for use on construction sites - special smooth and self-cleaning thread Static calculation and proof of conformity tested according to Austrian standard (ÖNORM) EN 1065.

Itm.Nr.	Description	Unit
4811012	Prop A30 180-300cm, painted	Item
4811022	Prop A35 210-350cm, painted	Item
4811032	Prop A40 240-400cm, painted	Item

## Positioning Mats, Stop Beads, Moisture Protection between Foundation and Walls



### Positioning mat

2 layers, made of high-density polyethylene, safe to use as drinking water, chemicalproof, unrottable and waterproof. Temperature stable from -30° to +80° C, weight 430 g/m<sup>2</sup>, approx. 520 µ, pressure resistance approx. 209 kN/m<sup>2</sup>, 20 running metres/roll.

Itm.Nr.	Description	Unit
NOP102EW5	Positioning mat, Premium 1.0m x 20m=20m <sup>2</sup> /roll 24rolls/pallet	Roll
NOP152EW5	Positioning mat, Premium 1.5m x 20m=30m <sup>2</sup> /roll 12rolls/pallet	Roll
NOP202EW5	Positioning mat, Premium 2.0m x 20m=40m <sup>2</sup> /roll 12rolls/pallet	Roll
NOP252EW5	Positioning mat, Premium 2.5m x 20m=50m <sup>2</sup> /roll 15rolls/pallet	Roll
NOP302EW5	Positioning mat, Premium 3.0m x 20m=60m <sup>2</sup> /roll 15rolls/pallet	Roll



### Edge stop bead RAPRO

The edge stop bead forms a clear end to the positioning mat above the soil or in the gravel. The bead is dowelled after having been sealed.

Itm.Nr.	Description	Unit
RAPRO	Edge stop bead RAPRO 2running metres Packaging unit20items/batch	Batch



### Moisture protection between foundation and wall Monarflex

Monarflex moisture protection between foundation and wall, made of environmentally friendly polyethylene with anti-slip surfaces. Suitable for horizontal sealing between foundation and rising masonry. Protects against rising damp. 120 Rollen/Palette

Itm.Nr.	Description	Unit
18428	Moisture protection between foundation and wall Monarflex 42cm x 25 running metres	Roll
18430	Moisture protection between foundation and wall Monarflex 29cm x 25 running metres	Roll
18431	Moisture protection between foundation and wall Monarflex 34cm x 25 running metres	Roll
18432	Moisture protection between foundation and wall Monarflex 13cm x 25 running metres	Roll

## Formwork Oil Injection / Formwork Oil

### Formwork oil injection Ferrum Plus

High-pressure spraying device for formwork oil, separating agents and other sprayable construction chemicals. Container made of steel with polyester coating (inside and out), large steel hopper, brass pump, oil-resistant cold-flexible hose, sight glass via shut-off valve for checking level control, continuously rotatable brass shower pipe 50 cm, precision flat jet nozzle with fine filter, replacement parts box with sealings and replacement nozzle.

## Formwork, Formwork Pipes and Construction Fleece



### Formwork oil injection, Ferrum Plus 5L

Filling capacity 5.0 l , overall content approx. 8.0 l, can be carried on the side with 1 carry strap, operating pressure 6bar, empty weight 4kg.

Itm.Nr.	Description	Unit
3560P	Formwork oil injection Ferrum Plus, 5L incl. e-parts box	Item



### Formwork oil injection, Ferrum Plus 10L

Filling capacity 10.0 l , overall content approx. 13.5 l, can be carried on the back with 2 cushioned carry straps, operating pressure 6 bar, empty weight 5.5 kg.

Itm.Nr.	Description	Unit
3580P	Formwork oil injection Ferrum Plus, 10L incl. e-parts box	Item

### Spare parts for formwork oil injection

Itm.Nr.	Description	Unit
1421F	Flat jet nozzle Ferrum Plus	Item
6001F	Sealing kit Ferrum Plus	Item
6300P	Spray pipe Ferrum Plus (hose and shut-off valve)	Item



### Formwork separating agent ECO

Ready-to-use, environmentally friendly and harmless formwork separating agent, bio-degradable. Can be used for interiors and exteriors as a separating agent for all types of formwork for the protection of construction machines and fittings against mortar and concrete bondings.

Itm.Nr.	Description	Unit
10615	Formwork separating agent ECO 25l/canister	CAN.
10653	Formwork separating agent ECO 200l/drum	Drum

## Fleece



### Geotextile fleece RPES AG 200g/m2

Mechanically fixed staple fibre fleece (non-woven), made of recycling mixed fibres, main component PES in natural white. Thickness 2 mm, tensile strength 1.5 kN7m, elongation &gt; 60%.

Itm.Nr.	Description	Unit
RPESAG2002100	Geotextile fleece RPES AG 200g/m <sup>2</sup> 2x100m white	Roll
RPESAG2004100	Geotextile fleece RPES AG 200g/m <sup>2</sup> 4x100m white	Roll

### Geotextile fleece PP AG 120

UV-stabilised geotextile fleece, grammage 120 g/m<sup>2</sup>, nominal thickness 1.31 (+/- 0.03) mm, porosity coefficient 4.10<sup>-3</sup> m/s.

Itm.Nr.	Description	Unit
PPAGHT1202100	Geotextile fleece PP AG HT 120g/m <sup>2</sup> 2x100 m/roll UV-stabilised, white	Roll
PPAGHT1204100	Geotextile fleece PP AG HT 120g/m <sup>2</sup> 4x100 m/roll UV-stabilised, white	Roll

### Geotextile fleece PP AG 150

UV-stabilised geotextile fleece, grammage 151 g/m<sup>2</sup>, nominal thickness 1.31 (+/- 0.03) mm, porosity coefficient 4.10<sup>-3</sup> m/s.

Itm.Nr.	Description	Unit
PPAGHT150250	Geotextile fleece PP AG HT 150g/m <sup>2</sup> 2x50 m/roll UV-stabilised, white	Roll
PPAGHT1502100	Geotextile fleece PP AG HT 150g/m <sup>2</sup> 2x100 m/roll UV-stabilised, white	Roll
PPAGHT1504100	Geotextile fleece PP AG HT 150g/m <sup>2</sup> 4x100 m/roll UV-stabilised, white	Roll

### Geotextile fleece PP AG 200

UV-stabilised geotextile fleece, grammage 207 g/m<sup>2</sup>, nominal thickness 1.31 (+/- 0.03) mm, porosity coefficient 5.10<sup>-3</sup> m/s.

Itm.Nr.	Description	Unit
PPAGHT200250	Geotextile fleece PP AG HT 200g/m <sup>2</sup> 2x50 m/roll UV-stabilised, white	Roll
PPAGHT2002100	Geotextile fleece PP AG HT 200g/m <sup>2</sup> 2x100 m/roll UV-stabilised, white	Roll
PPAGHT2004100	Geotextile fleece PP AG HT 200g/m <sup>2</sup> 4x100 m/roll UV-stabilised, white	Roll